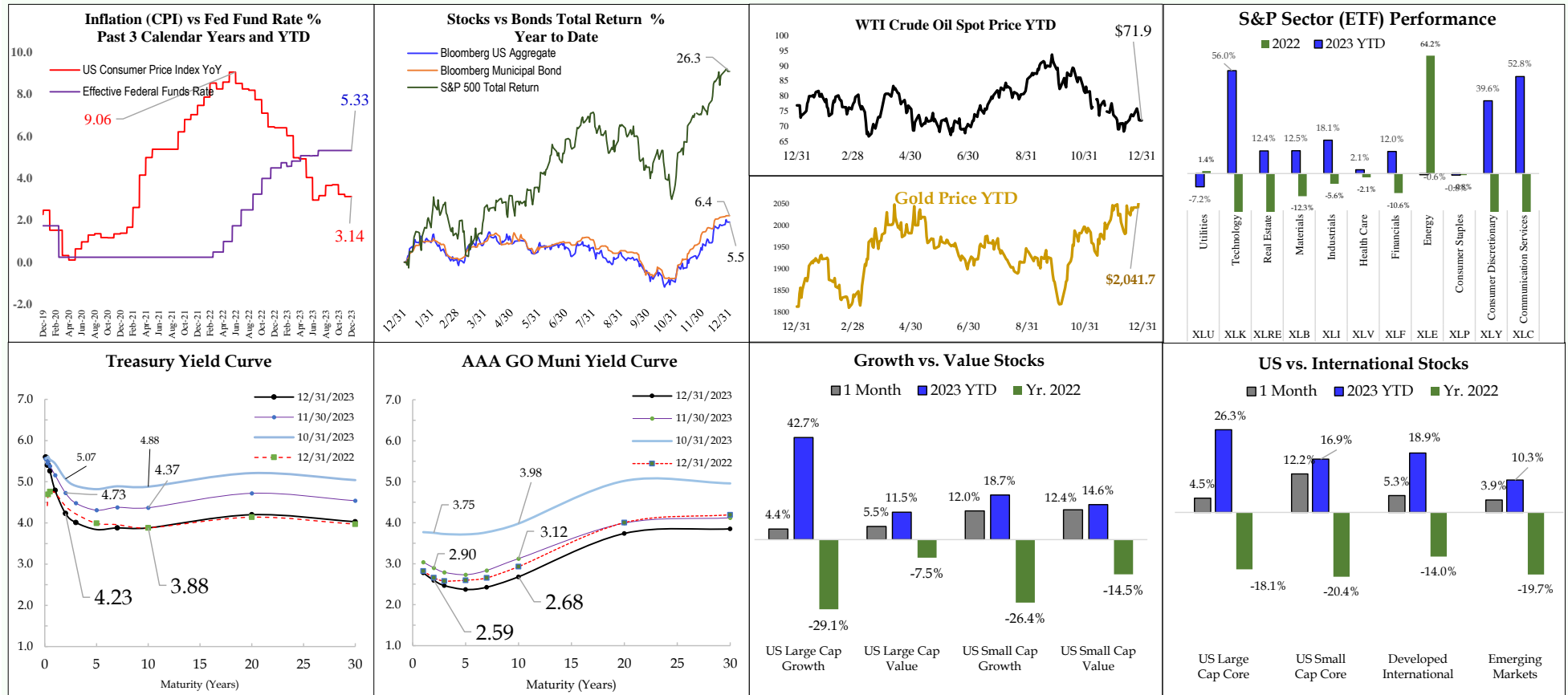


Eideard Group Monthly Market Review - As of 12/31/2023



Asset Classes	Total Return Indexes Represented	MTD	Past 3 Months	YTD	Trailing 1 Year	Trailing 3 Years
NASDAQ	NASDAQ Composite	5.6%	13.8%	44.6%	44.6%	6.0%
Dow Jones Industrial Average	Dow Jones Industrial Average	4.9%	13.1%	16.2%	16.2%	9.4%
US Large Cap Stocks	S&P 500	4.5%	11.7%	26.3%	26.3%	10.0%
US Small Cap Stocks	Russell 2000	12.2%	14.0%	16.9%	16.9%	2.2%
Developed International Stocks	MSCI EAFE	5.3%	10.5%	18.9%	18.9%	4.5%
Emerging Market Stocks	MSCI Emerging Markets	3.9%	7.9%	10.3%	10.3%	-4.7%
Global Equity	MSCI ACWI	4.8%	11.1%	22.8%	22.8%	6.2%
US Municipal Bonds	Bloomberg Barclays Municipal Bond	2.3%	7.9%	6.4%	6.4%	-0.4%
US Treasury Bonds	Bloomberg Barclays US Treasury	3.4%	5.7%	4.1%	4.1%	-3.8%
US Aggregate Bonds	Bloomberg Barclays US Aggregate	3.8%	6.8%	5.5%	5.5%	-3.3%
US Corporate Investment Grade Bond	Bloomberg Barclays US Corporate	4.3%	8.5%	8.5%	8.5%	-3.3%
US Corporate High Yield Bond	Bloomberg Barclays US Corporate High Yield	3.7%	7.2%	13.4%	13.4%	2.0%
Master Limited Partnerships (MLPs)	Alerian MLP Index	-2.2%	5.0%	26.6%	26.6%	32.4%

Asset Class/Sector Return Data based on PSN report. Yield Curve data is from Treasury.gov and IDS.